



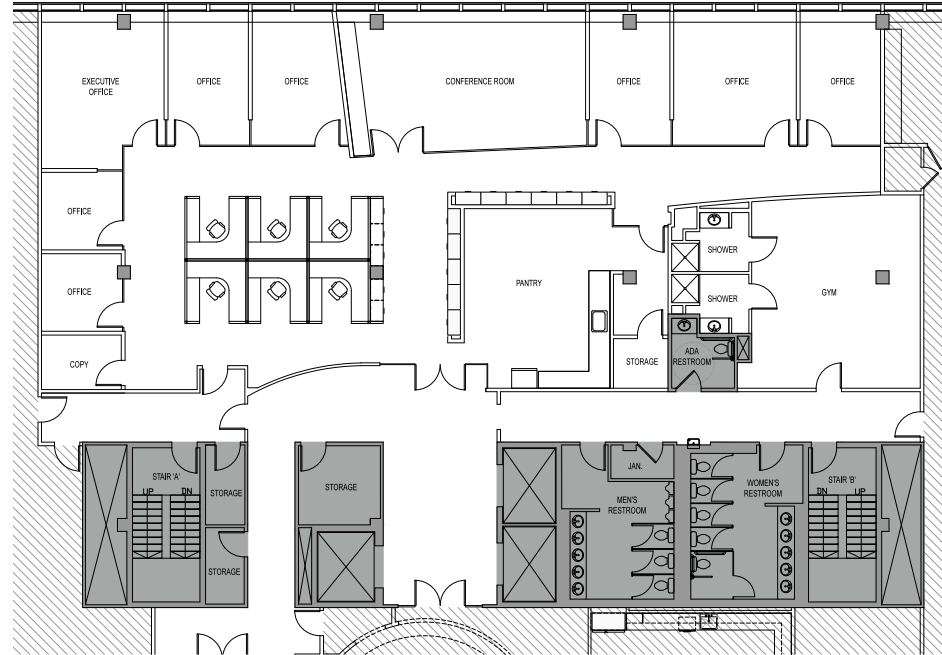
262 Harbor Drive Partial 4th Floor 6,218 RSF

OFFICE WORKSTATION COUNTS

Private Offices	7
Workstations	6
Reception	1
TOTAL SEATS	14

SUPPORT

Conference Rooms	1
Conference Lounge	1
Copy Room	1
IT/Storage	1



FOR MORE INFORMATION, PLEASE CONTACT

MICHAEL NORRIS
212 318 9760
MICHAEL.NORRIS@CUSHWAKE.COM

ADAM KLIMEK
203 326 5856
ADAM.KLIMEK@CUSHWAKE.COM

TRIP HOFFMAN
203 326 5812
TRIP.HOFFMAN@CUSHWAKE.COM

DANA PIKE
212 542 2116
DPIKE@GCOMFORT.COM



A full commission computed and earned in accordance with the rates and conditions of our agency agreement with our principal, when received from our principal, will be paid to the cooperating broker who consummates a lease which is unconditionally executed and delivered by and between lessor and lessee (a copy of the rates and conditions referred to above is available upon request).

