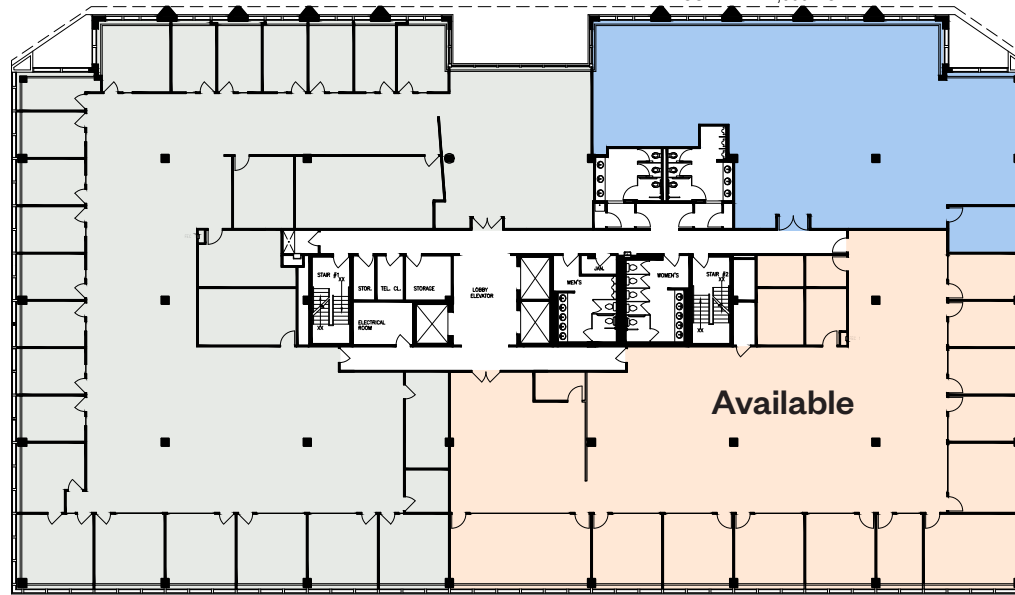




**262 Harbor Drive  
Partial 1st Floor  
10,434 RSF**



**FOR MORE INFORMATION, PLEASE CONTACT**

**MICHAEL NORRIS**  
212 318 9760  
MICHAEL.NORRIS@CUSHWAKE.COM

**ADAM KLIMEK**  
203 326 5856  
ADAM.KLIMEK@CUSHWAKE.COM

**TRIP HOFFMAN**  
203 326 5812  
TRIP.HOFFMAN@CUSHWAKE.COM

**DANA PIKE**  
212 542 2116  
DPIKE@GCOMFORT.COM



A full commission computed and earned in accordance with the rates and conditions of our agency agreement with our principal, when received from our principal, will be paid to the cooperating broker who consummates a lease which is unconditionally executed and delivered by and between lessor and lessee (a copy of the rates and conditions referred to above is available upon request).

